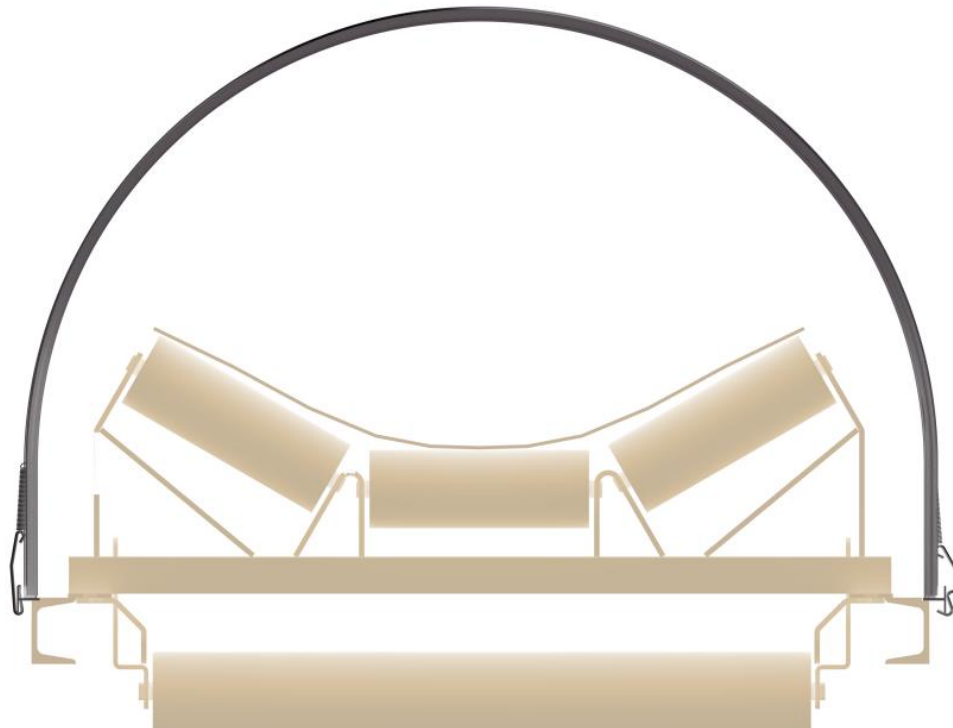
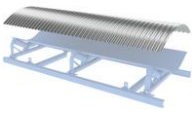


Covers for Conveyor Belt Systems



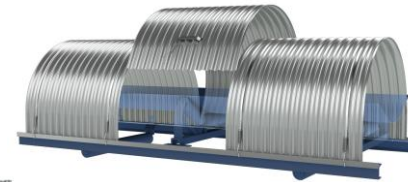


Content:

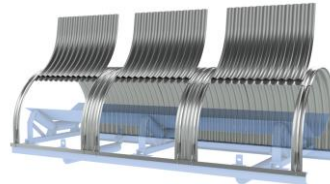
- standard covers



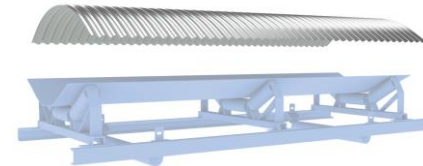
- foldable covers



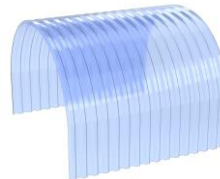
- covers with opening



- individual Covers

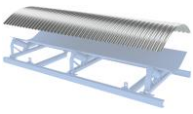


- hard PVC covers



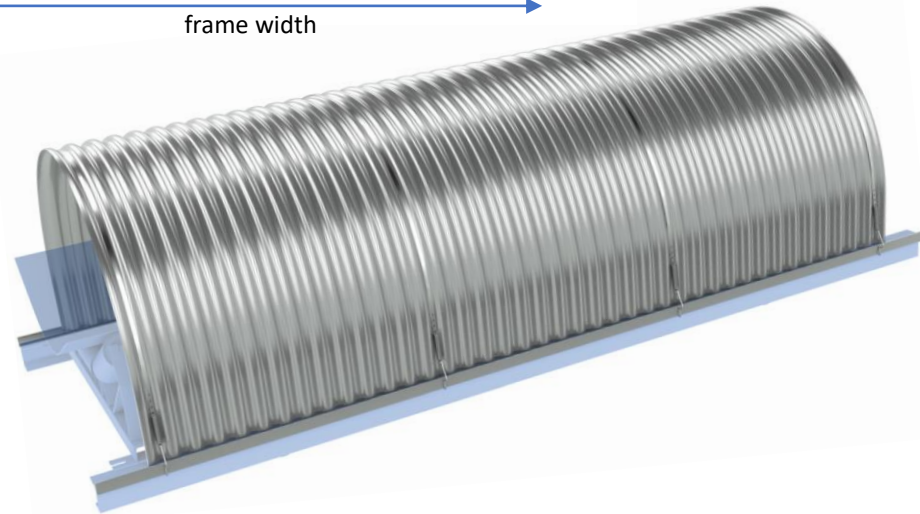
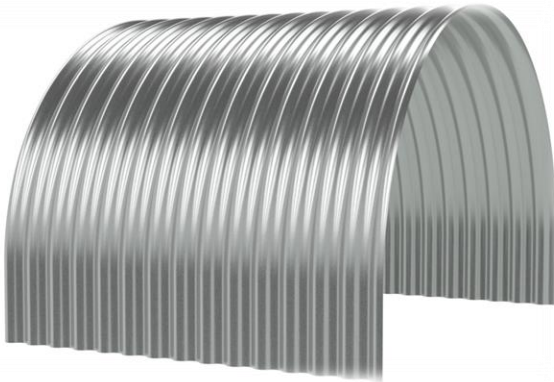
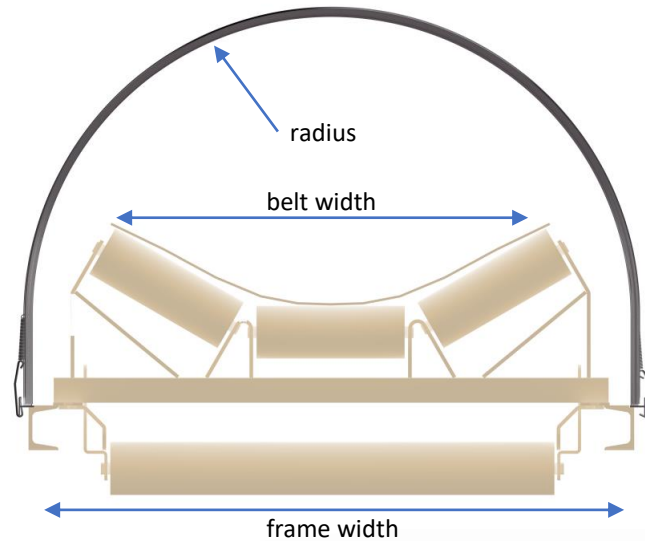
- fastening systems

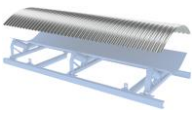




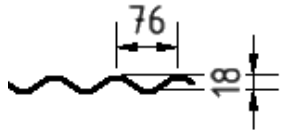
Dimensions of the standard covers:

No.	belt width (in mm)	frame width (in mm)	radius (in mm)	weight (in kg)
0	300	600	300	10,3
1	400	700	350	11,5
2	500	800	400	12,9
3	650	950	475	14,7
4	800	1.150	575	17,1
5	1.000	1.350	675	19,5
6	1.200	1.600	800	22,5
7	1.400	1.800	900	24,9
8	1.600	2.050	1.025	27,9
9	1.800	2.250	1.125	29,7
10	2.000	2.500	1.250	33,3



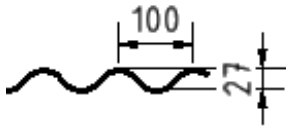


Different profiles for different applications:



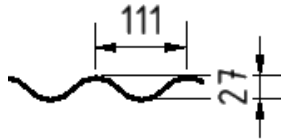
Standard-Profile 18/76

Available in widths of 836 and 1.064 mm
Surfaces: galvanised, aluzinc, polyester-coated
Material: steel, aluminium, stainless steel
Ideally suited for all standard covers and many other applications



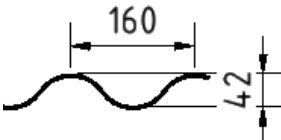
Achenbach-Profile 27/100

Available in a width of 800 mm
Surfaces: galvanised, aluzinc
Cover Profile for higher loads (up to cover No. 6)



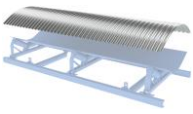
Jumbo-Profile 27/111

Available in a width of 1.000 mm
Surfaces: galvanised, aluzinc, polyester-coated
Material: steel, aluminium
Cover Profile for larger covers and Jumbo Covers



Special-Profile 42/160

Available in a width of 960 mm,
Surfaces: galvanised, aluzinc, polyester-coated
Material: steel, aluminium,
Profile for particularly high loads and large Jumbo Covers

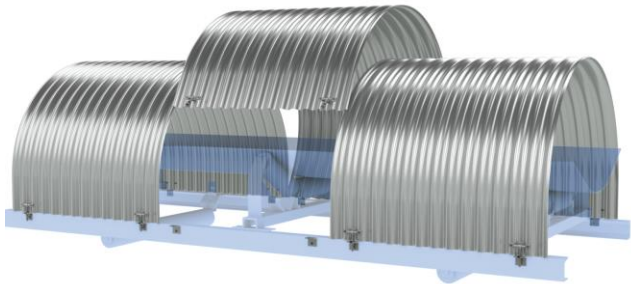


Hinged covers for maintenance, repair and inspection work:



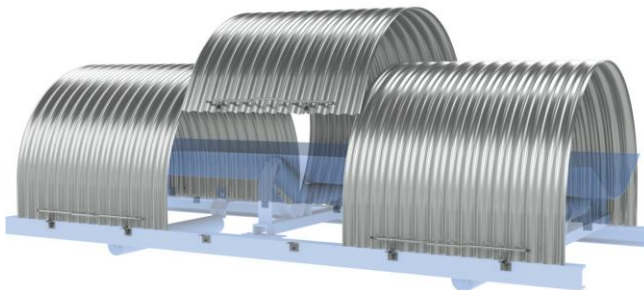
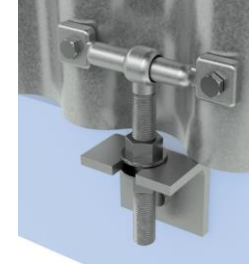
System LOOP

Fastening with short tension strap and special spring



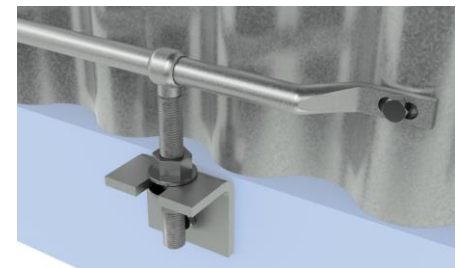
System SimpleTec

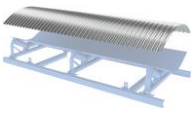
Fastening with galvanized bolts and galvanized eyebolts



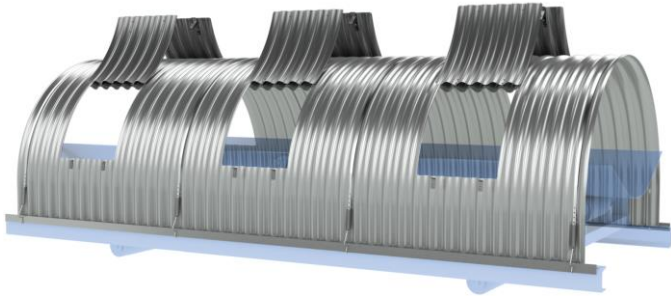
System SuperTec

Attachment by V2A hinged handle bar with integrated handle and V2A eyebolts.



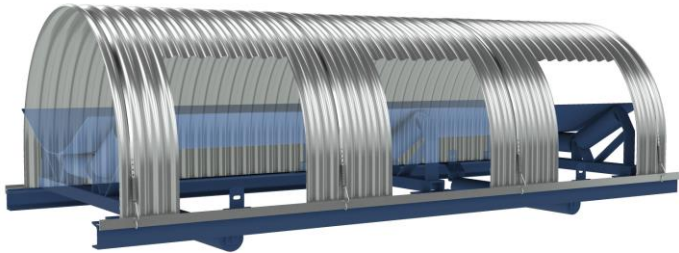


Covers with flap for maintenance, repair and inspection work:



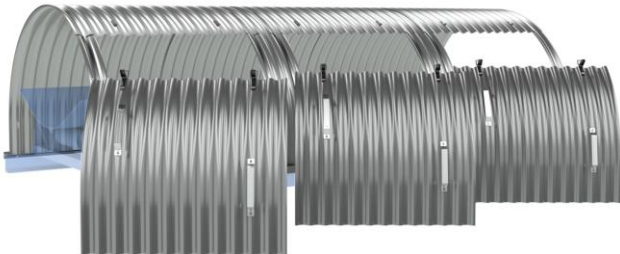
Inspection opening

Possible on one or both sides
Standard sizes 400 x 400 or 600 x 600
Openings covered with cambered flap



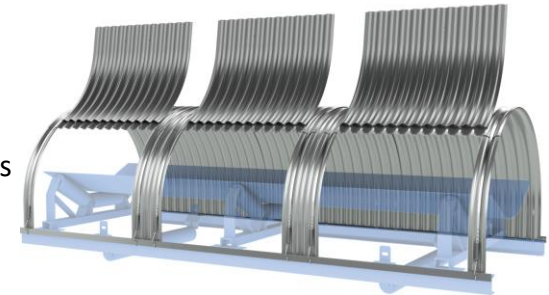
Inspection cover

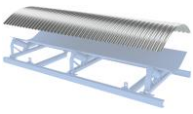
Cover permanently open on one side;
Opening approx. 600 x 600 mm for easily,
constant monitoring of the system and
conveyed goods



Top cover type A and type B

Possible on one or both sides, opening
approx. 1/3 of the cover, flap with stainless
steel handle can be removed
(type A) or opened (type B)

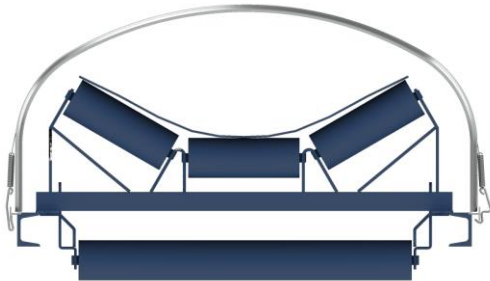




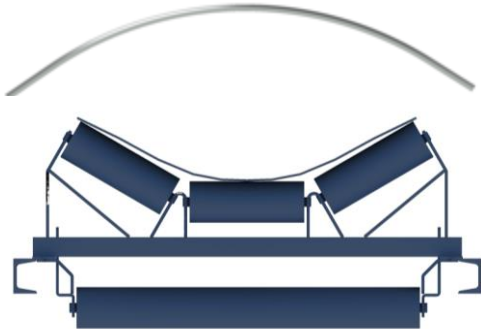
Individual covers :

In addition to the standard covers, there are various other designs. Examples include the "arena cover" variant with a lower design and the "arch cover" as a simple, low-cost alternative

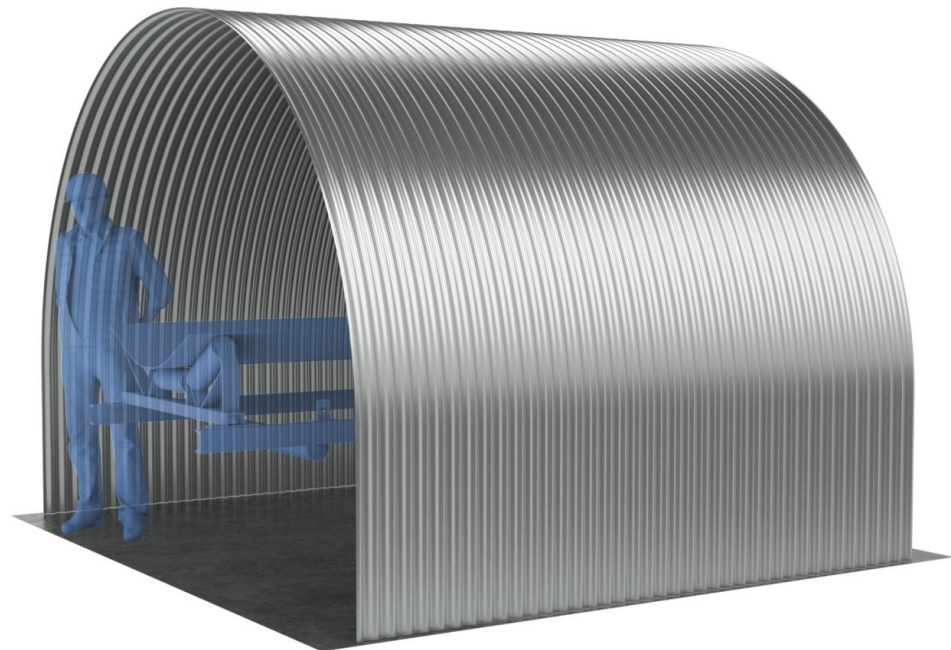
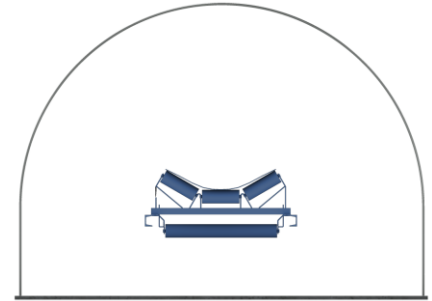
arena-cover

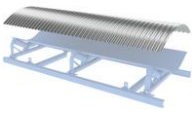


arch cover



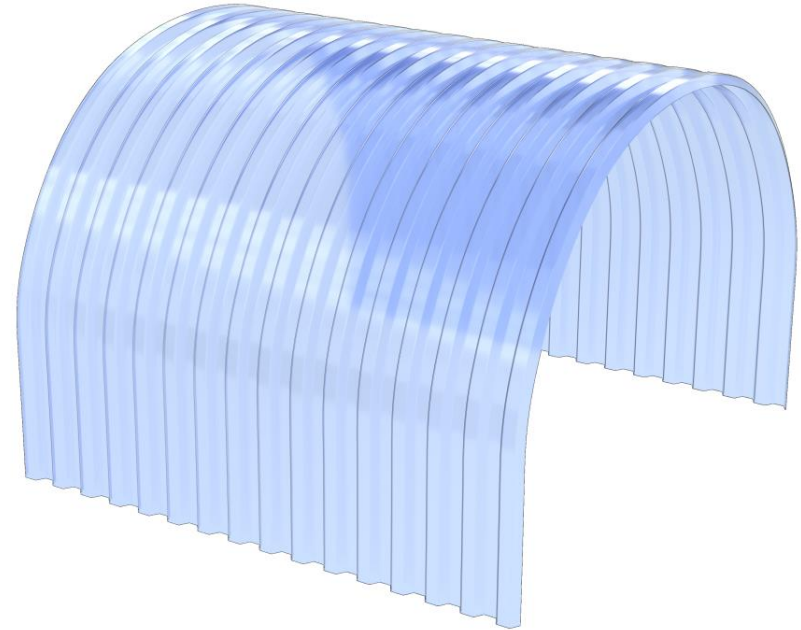
Another special cover is the jumbo cover. With this type of cover, one or two walkways can be enclosed as required, allowing the system to be maintained all year round regardless of the weather.





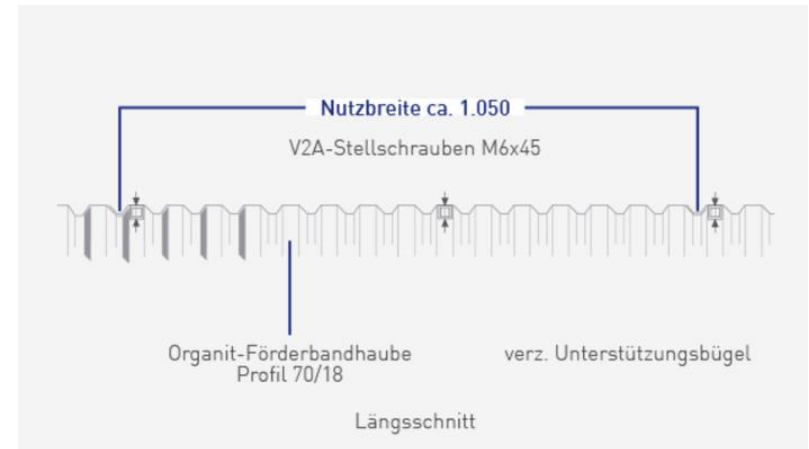
Dimensions of the plastic hoods:

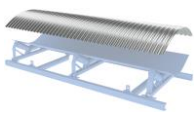
No.	belt width (in mm)	frame width (in mm)	radius (in mm)	weight (in kg)
1	400	700	350	3,6
2	500	800	400	4,0
3	650	950	475	4,5
4	800	1.150	575	5,3
5	1.000	1.350	675	6,0
6	1.200	1.600	800	7,0
7	1.400	1.800	900	7,7
8	1.600	2.050	1.025	8,6
SP		2.400	1.200	10,0



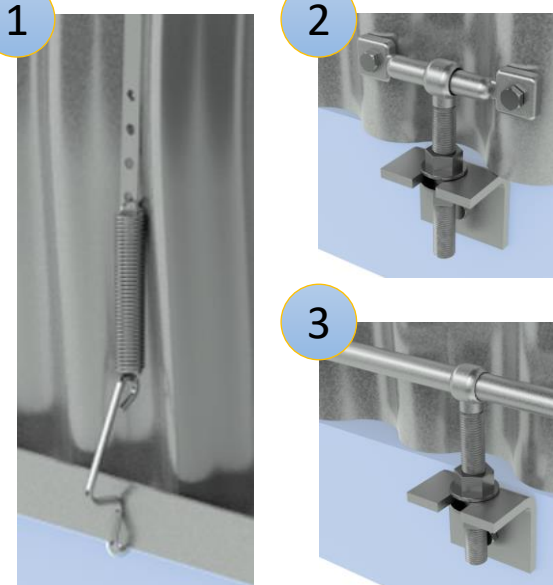
Organit conveyor belt covers made of rigid PVC transparent natural in sheet piling profile 70/18 have the following features

- flame retardant DIN 4102
- impact resistant DIN 7748
- chemically resistant DIN 16929
- maintenance-free
- low weight
- easy handling





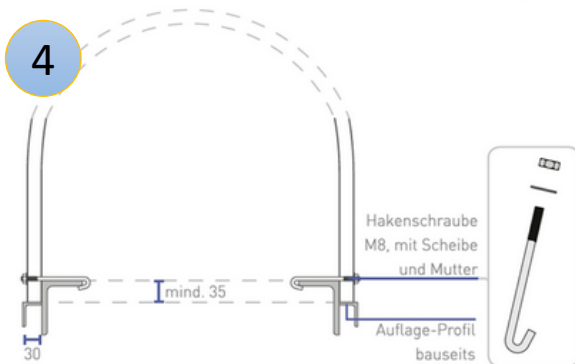
Fastening systems :

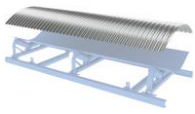


Fastening the covers with our tensioning strap system (1) is the classic typ; tried and tested worldwide for decades, easy to use and made entirely of stainless steel.

Our SimpleTec (2) and SuperTec (3) versions are used if the covers only need to be removed with a tool.

If the covers are only rarely or never removed, you can also use hook screws (4) or simple self-drilling screws (5) to attach the covers to the cover-supporting substructure.





Achenbach GmbH Metalltechnik

Lindestraße 10
57234 Wilnsdorf-Rudersdorf

Phone: +49 2737 98630

Mail: info@achenbach-mt.de

www.achenbach-mt.de