

Organit Rigid PVC Hooded Covers made of special plastic



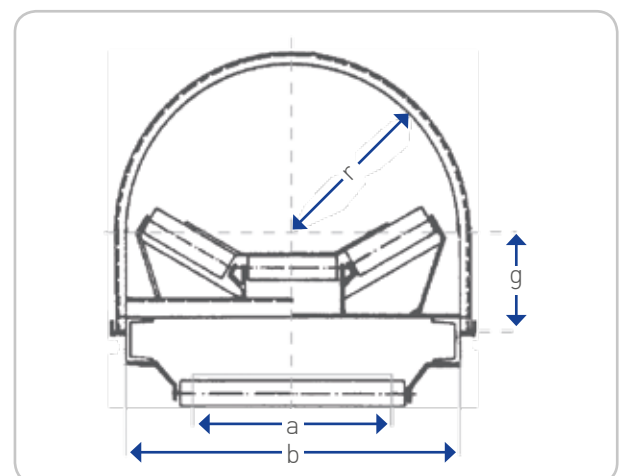
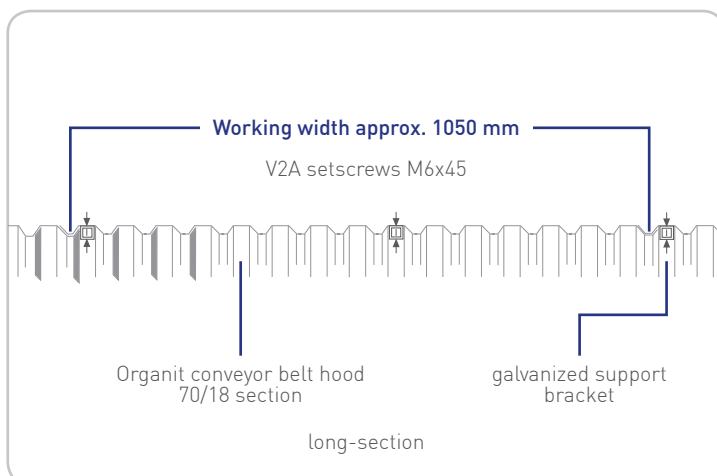
Organit Rigid PVC Hooded Covers from Achenbach

Chemically resistant + maintenance free

For decades, Achenbach is a renowned manufacturer of conveyor covers made of metal. We completed our diverse portfolio expanding on the market of plastic made Organit-covers. Different sectors of industry require alternatives to the metal systems due to legally prescribed conditions. In particular, plant for the food, sugar, chemical, potash and salt industries are dependent upon hooded covers made of Organit plastics. The corrosion resistant hoods reliably protect conveyor belt, roller bearings and the material conveyed against the weather. They can be easily removed at any location so that the conveyor belt can be inspected and then replaced.

Organit hooded conveyor belt covers made of natural transparent rigid PVC in the sheet piling section 70/18 have the following characteristics:

- Hardly inflammable DIN 4102
- Impact resistant DIN 7748
- Chemically resistant DIN 16929
- Maintenance free
- Low weight
- Convenient handling



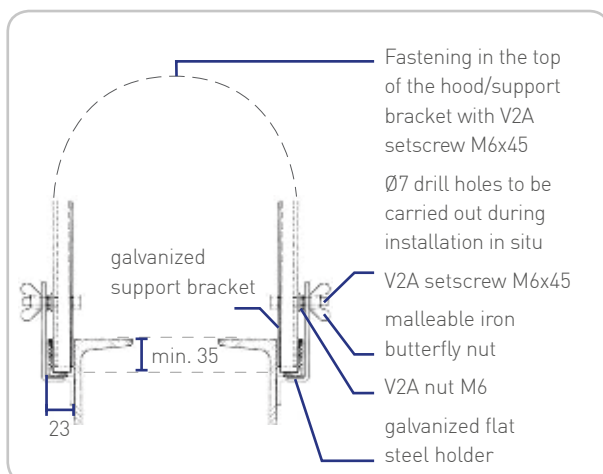
Organit Rigid PVC Hooded Covers made of special plastic



No.	Belt width in mm (a)	Frame width in mm (b)	Radius in mm (r)	Hood weight (kg approx.)	Fastenings required per hood*	Weight of the fastenings per hood (kg approx.)
1	400	700	350	3.6	each 1 SB / hood	0.5
2	500	800	400	4.0	each 1 SB / hood	0.5
3	650	950	475	4.5	each 1 SB / hood	0.5
4	800	1150	575	5.3	each 2 SB / hood	1.0
5	1000	1350	675	6.0	each 2 UB / hood	7.4
6	1200	1600	800	7.0	each 2 UB / hood	7.6
7	1400	1800	900	7.7	each 2 UB / hood	7.7
Spec		2400	1200	10.0	each 2 UB / hood	

Straight sections (g) = 200 mm; SB = tightening strap; UB = support bracket

* plus 1 piece of fastening per belt for the beginning/end of the tunnel.



Fastenings for covers No. 5 to Spec Type UB (support bracket)

For covers No. 5 to Spec. galvanized or stainless steel support brackets with galv./V2A fasteners. The bearing at the basis of the Organit-covers consists of continuous steel profiles in the construction which keep the cover in a stable position.

**We resolve your cover-problems.
Ask for Achenbach!**